



DAWN SANDOVAL

Residential

2 Bedrooms

Apartment

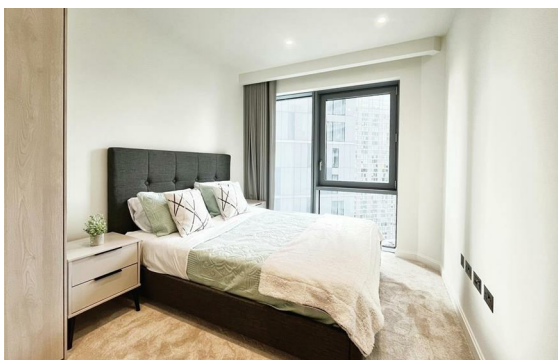
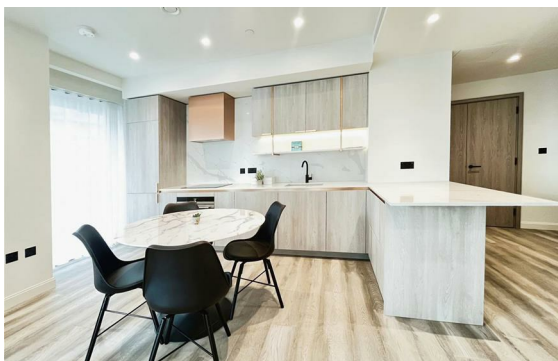
Located in London

£3,600 Per Month



info@dawnsandovalresidential.cc www.dawnsandovalresidential.co.uk

0207 093 1702



**DAWN
SANDOVAL**
Residential

5 Indecon Square

Lightermans Road

London

E14 9DQ

0207 093 1702

info@dawnsandovalresidential.com

www.dawnsandovalresidential.co.uk

Bright and spacious 2-bedroom apartment in the heart of Canary Wharf. Fully furnished with modern decor and stylish finishes. Open-plan living area with a sleek kitchen. Prime location with excellent amenities and transport links. Perfect for young professionals or couples. Book your viewing today!

Energy Efficiency Rating: B

Agents Note: Whilst every care has been taken to prepare these particulars, they are for guidance purposes only. All measurements are approximate and are for general guidance purposes only and whilst every care has been taken to ensure their accuracy, they should not be relied upon and potential buyers/tenants are advised to recheck the measurements.